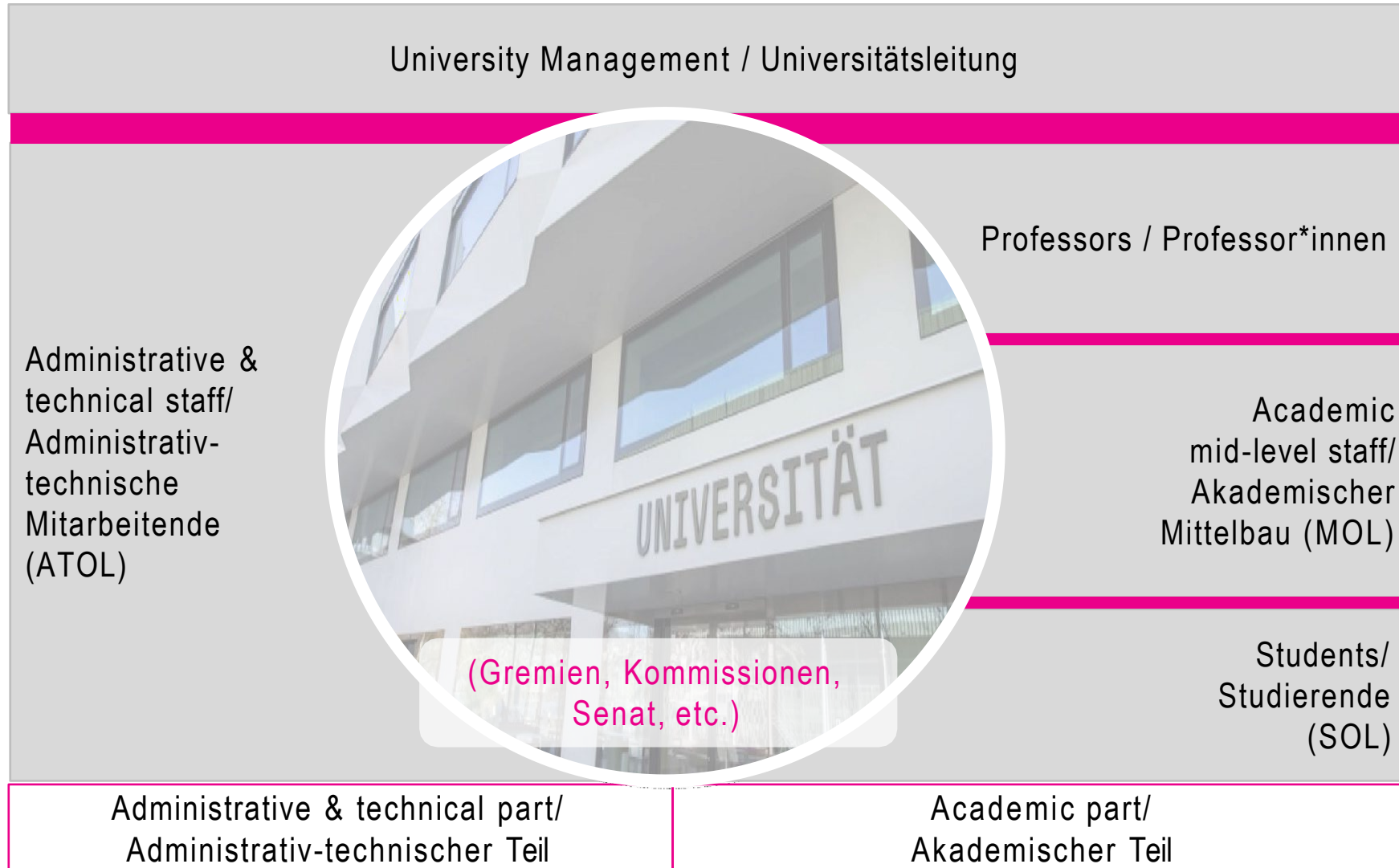


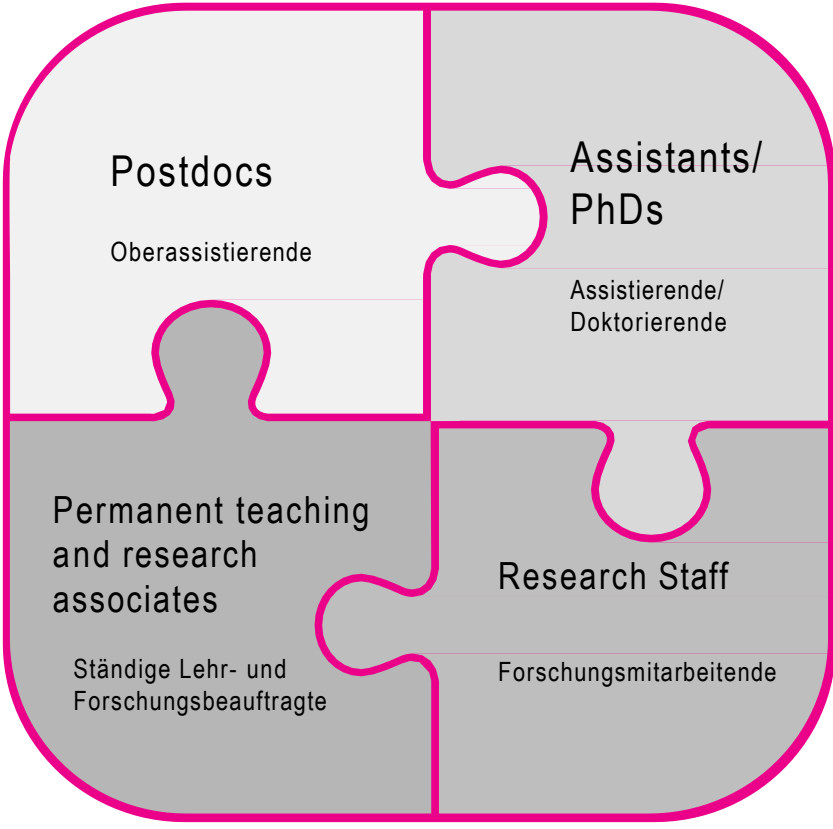
Who we are



Who we are



Academic
mid-level staff/
Akademischer
Mittelbau (MOL)



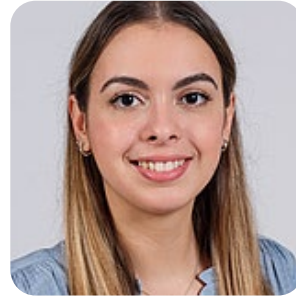
Who we are



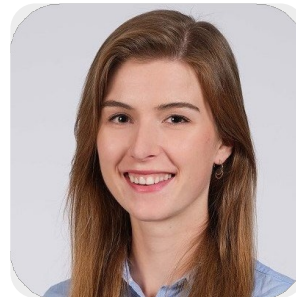
Academic
mid-level staff/
Akademischer
Mittelbau (MOL)



Andrea Aegerter
(non-faculty seat)



Ad Interim:
Alejandra
Rodriguez
(WF)



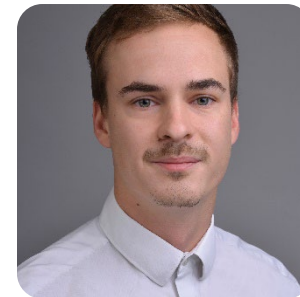
Katharina Dölp
(WF)



Lea Keller
(RF)



Alexander Ort
(GMF)



Johannes Saal
(KSF)



Joshua Schibli
(TF)

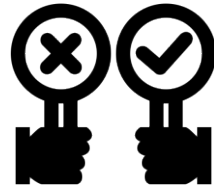
What we do



Representation

represents the academic mid-level staff and is committed to the interests and issues of its members

repräsentiert den akademischen Mittelbau und engagiert sich für die Interessen und Themen der Angehörigen



Political Participation

enables academic mid-level staff to participate in the decisions that are developed at university level

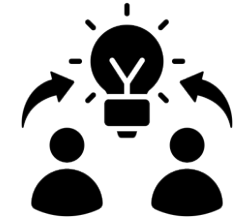
ermöglicht es dem akademischen Mittelbau, an den Entscheidungen zu partizipieren, die auf Universitätsebene entwickelt werden



Working Conditions

is committed to ensuring that all members of the academic mid-level staff benefit from working conditions that enable them to achieve their professional and academic goals

setzt sich dafür ein, dass alle Angehörigen des akademischen Mittelbaus von Arbeitsbedingungen profitieren, die es ihnen ermöglichen, ihre beruflichen und wissenschaftlichen Ziele zu erreichen



Knowledge Transfer

coordinates the work of all gremiums and facilitates knowledge transfer

koordiniert die Arbeit der Vertretungen und ermöglicht den Wissenstransfer

What we do



Represent and support the academic mid-level staff **throughout all phases of their academic journey** at the University of Lucerne



Orientation

Knowledge building, social connection & networking



Qualification

Deepening knowledge, social exchange & networking



Re-Orientation & Exit

External knowledge, tools & networking



Get in touch with us!

All members of the academic mid-level staff
are invited to

contribute their concerns or ideas

and to

participate

in the academic mid-level staff organization
(MOL) of the University of Lucerne.

Alle Angehörigen des akademischen Mittelbaus sind eingeladen,
ihre Anliegen oder Ideen einzubringen sowie in der
Mittelbauorganisation Universität Luzern (MOL) mitzuwirken.

Contact Options



MOL Meetings



Via e-mail: mol@unilu.ch



Newsletter